

**Harrow BID**

April 2017

03/04/2017 to 30/04/2017



REGION - Greater London

Monday to Sunday

COUNT TYPE: Footfall Counts

Monthly Footfall

Benchmark calculations (Year on Year and Month on Month) have been calculated using like for like data sets (only those counters available in both comparison periods) to ensure statistical accuracy

	Year to Date % Change		Year on Year % Change		Month on Month % Change	
	2017	2016	2017	2016	2017	2016
Harrow BID	▲ 8.9 %		▲ 8.0 %		▲ 1.9 %	▲ 1.5 %
Greater London	▲ 0.4 %	▼ -3.1 %	▲ 1.8 %	▼ -5.2 %	▲ 4.9 %	▲ 5.9 %
UK	▲ 0.3 %	▼ -2.8 %	▲ 1.8 %	▼ -4.9 %	▲ 4.0 %	▲ 5.3 %

Headlines

Footfall for the year to date is 8.9% up on the previous year.

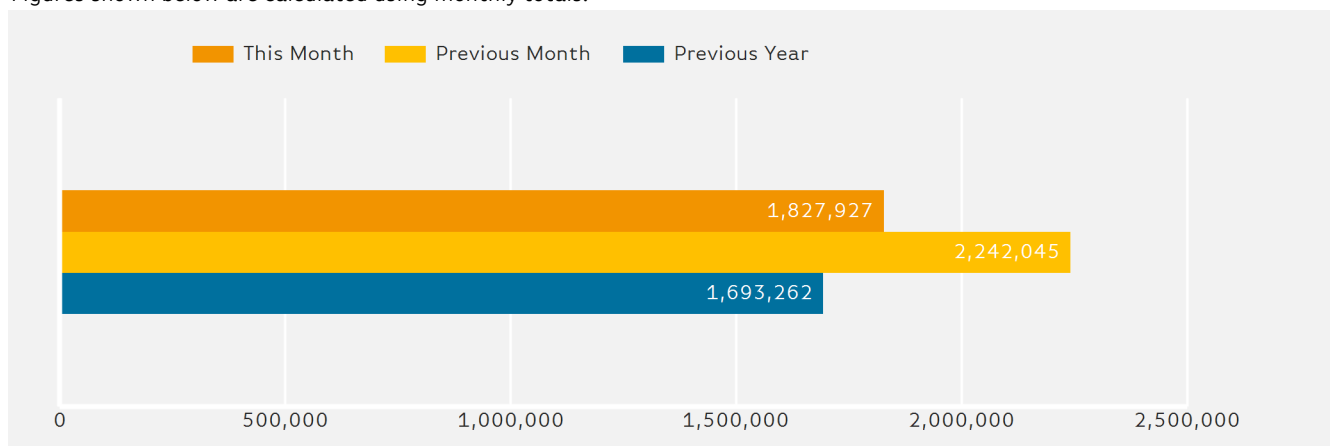
The number of visitors counted for month commencing 3 April 2017 was 1,827,927.

The busiest day in month commencing 3 April 2017 was Saturday 8 April with 87,715 visitors.

The peak hour of the month was 15:00 on Saturday with footfall of 10,101

Footfall Totals by Month

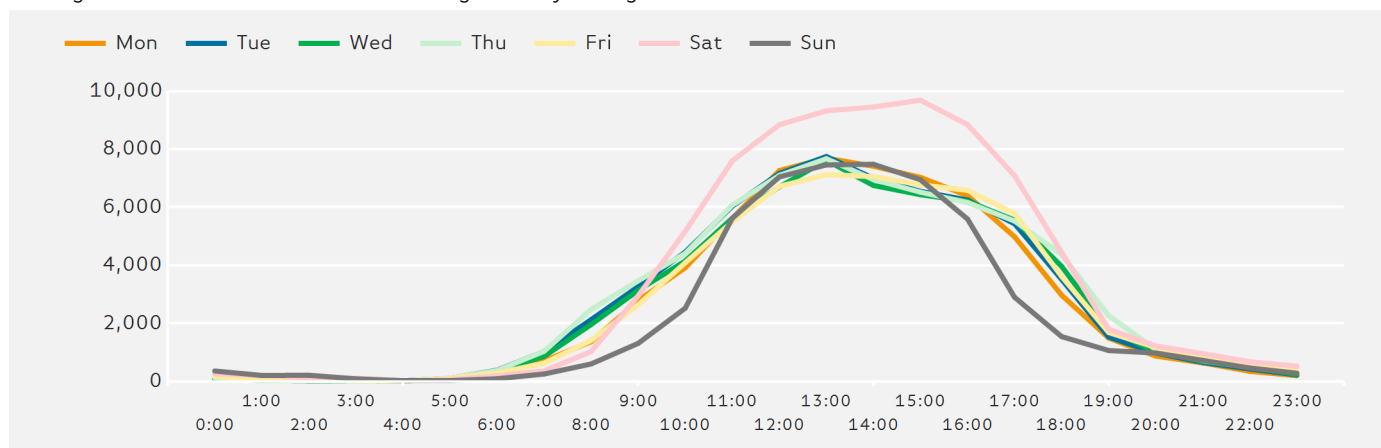
Figures shown below are calculated using monthly totals.



Springboard follows the BRC calendar consisting of complete weeks (Sun- Sat or Mon-Sun) to ensure that the same day is comparable each week. Each month is compiled from a set of full weeks which results in a calendar of a 4 week month, 4 week month, 5 week month pattern.

Footfall by Hour

The figures shown below are calculated using a weekly average



Weather



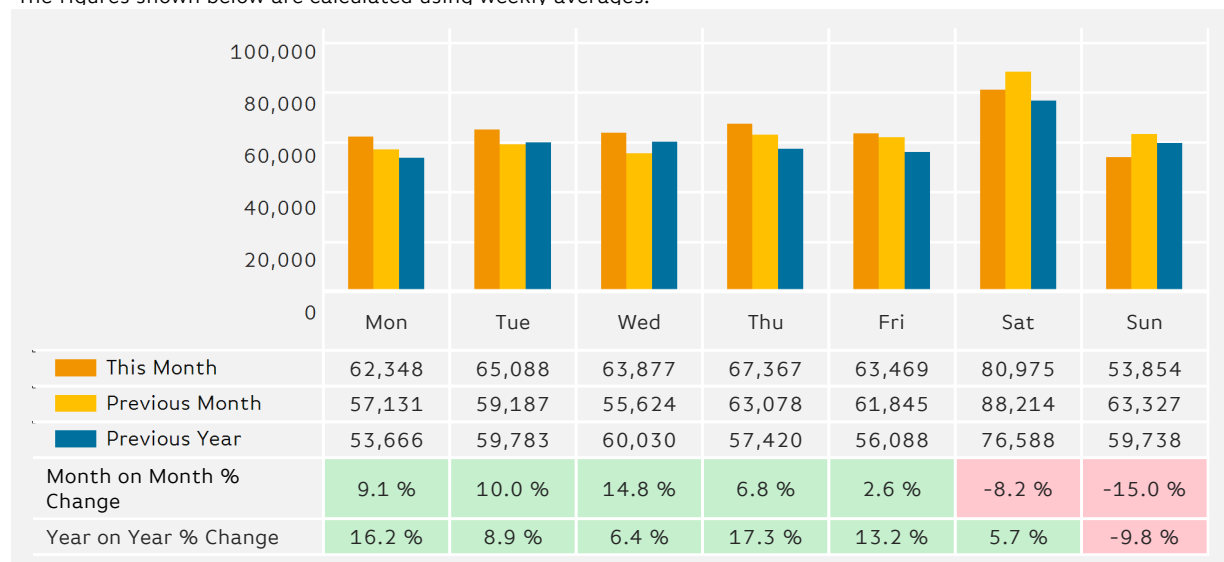
Number of days this month	11	16	1
Number of days same month last year	11	13	4

Average Temperature

Average Temperatures	Maximum Temperature	Minimum Temperature
2017	14.6	4.6
2016	12.7	4.0

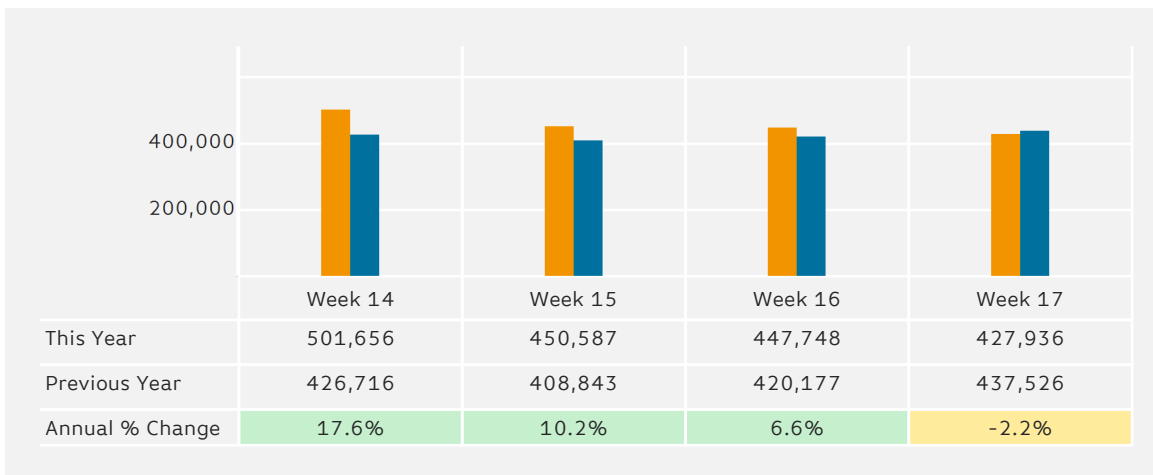
Footfall by Day

The figures shown below are calculated using weekly averages.



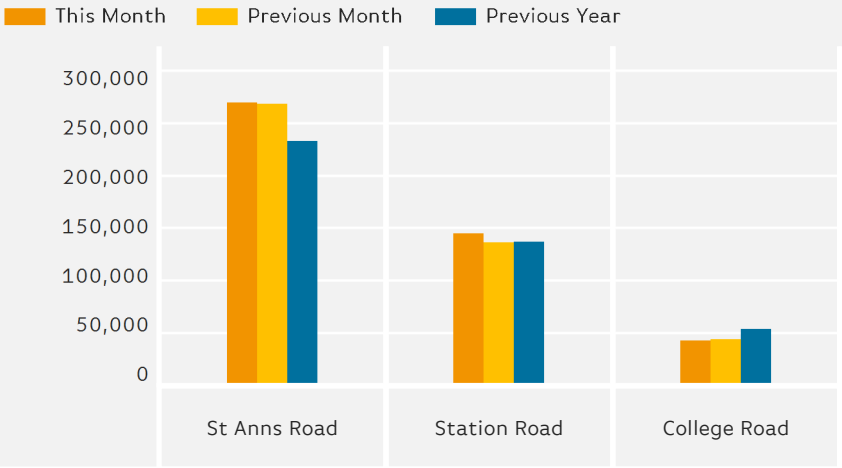
Footfall by Week of Month

The figures shown below are calculated using weekly totals.



Footfall Totals

The figures shown below are calculated using weekly averages.

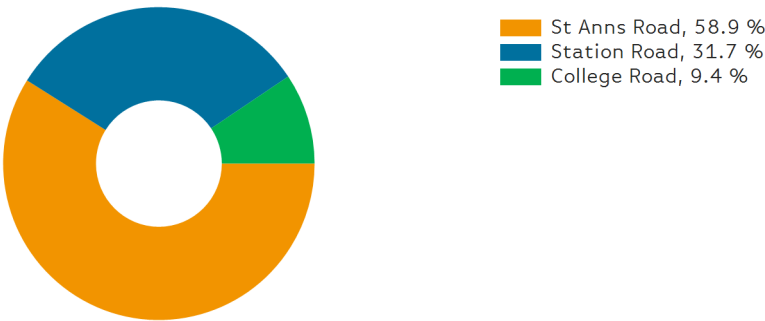


	St Anns Road	Station Road	College Road
This Month	269,295	144,738	42,949
Previous Month	268,228	135,955	44,226
Previous Year	232,809	136,787	53,720
Year on Year % Change	15.7 %	5.8 %	-20.0 %

Footfall Totals

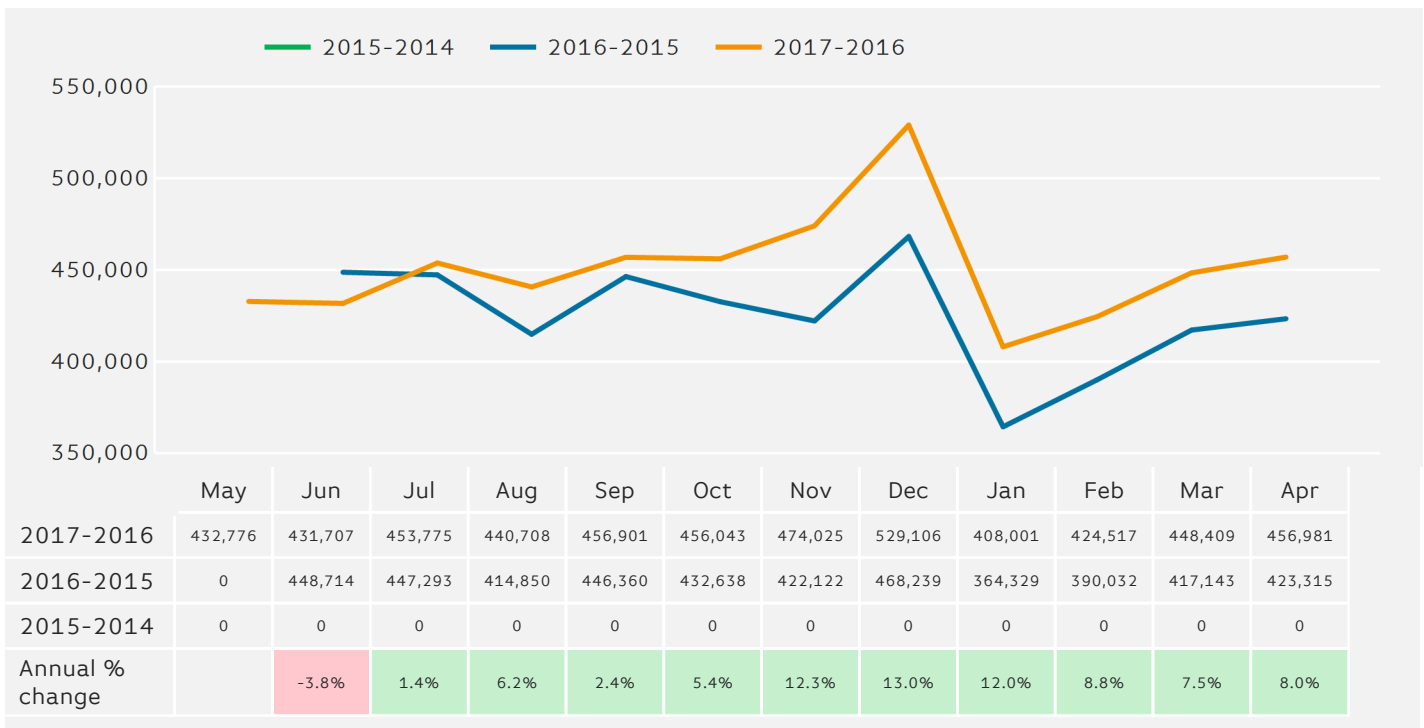
Counting By Location - Main Locations Only

The figures shown below are based on weekly averages



Footfall - Rolling 12 Months

The figures shown below are calculated using weekly averages.



Year to Date % Change is the annual % change in footfall from January of this year compared to the same period last year.

Year on Year % Change is the % change in footfall for this week compared to the same week in the previous year.

Week on Week % Change is the % change in footfall for this week from the previous week.